



Vitality

7 Stage

Reverse Osmosis
Drinking Water Systems



- 100 gpd high rejection TFC membrane
- NSF listed 4 gallon united tanks™ storage tank with stainless steel port & original JG heavy duty ball valve
- Quick connect fittings featuring Safelock™ clips
- With Proflush™ to enhance membrane performance
- Attractive euro-soft extra tall faucet
- Automatic shut-off valve (when tank is full)
- Built-in pressure gauge for performance monitoring
- Color coded tubing for easier installation
- Inlet feed ball valve for easier maintenance
- Complete installation kit and instructions manual
- unlimited warranty
- Made of high quality certified & listed parts and components.

Enjoy

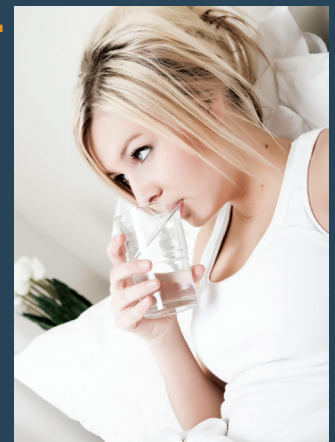
**Pure and Healthy Water for Drinking, Cooking, Ice Making,
Coffee & Tea, Food Processing, Pets & Plants...**



**... At Homes,
Offices, Schools,
Restaurants, &
Laboratories.**



For Every Day Life!



How is water contaminated?

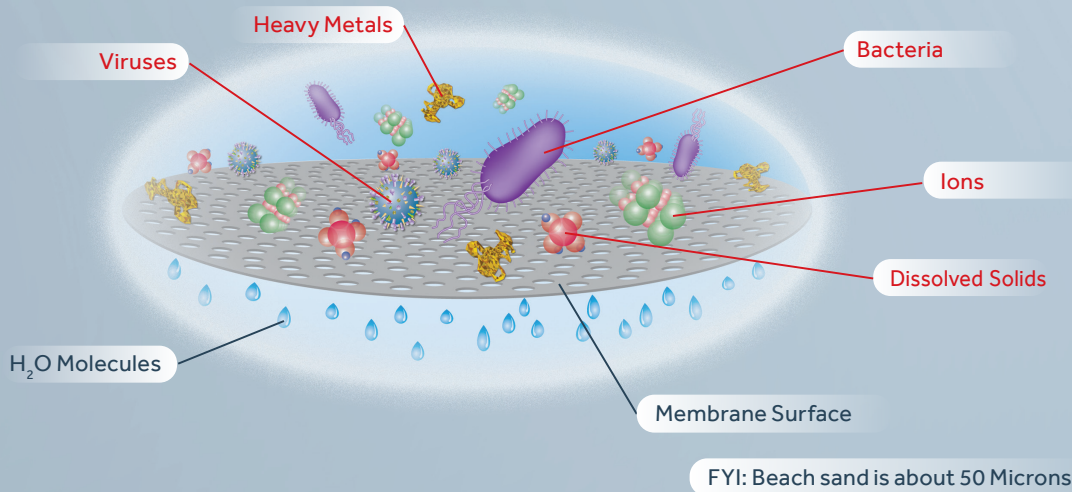
Being the world's universal solvent, water constantly dissolves and absorbs contaminants while traveling miles from its source to you.

Contaminants such as heavy metals, salts, dissolved solids, bacteria, and sometimes viruses may find their way in to your water supply.



How does reverse osmosis work?

With the **Xitalily** purification technology and breakthrough engineering, it is the finest level of filtration available.



Water pressure forces smaller H₂O molecules through very tiny semi-permeable membrane pores, which measure 0.0001 microns. This acts as a barrier to contaminants, which are rejected by the membrane and flushed down the drain.

The Pure Water Machine, incorporates a Complete 7-stage water treatment & purification system:

Stage 1

5 Micron polypropylene sediment pre-filter to extract suspended materials such as sediments, rust, insects, and other particles down to micron.

Stage 2-3

Double carbon block filters to absorb heavy chlorine and chlorine by-products such as chloramine, THM and TCE. The double carbon briquettes filter out organic matter from water without release of carbon fines.

Stage 4

High rejection flat sheet Thin Film Composite (TFC) membrane; designed to reject a wide spectrum of impurities including Total Dissolved Solids (TDS), heavy metals, bacteria, / viruses.



Stage 5

3-line Coconut Shell; AC filter is used to remove dissolved gases, bad taste and odor from product water. This is the polishing stage before consumption.

Stage 6

Filters are typically used to add minerals back into the water. Both Alkaline and Mineral filters will increase the pH and TDS of water supplied. The filter design allows for maximum contact time with various media inside.

Stage 7

High intensity UVC light destroys the DNA of various living particles and protects you from water borne biological impurities.

